

Cisco Aironet 1400 Series Wireless Bridge



OVERVIEW

The Cisco Aironet® 1400 Series Wireless Bridge creates a new benchmark for wireless bridging by providing a high-performance and feature-rich solution for connecting multiple LANs in a metro area. Building a metropolitan area wireless infrastructure with the Cisco Aironet 1400 Series Wireless Bridge provides deployment personnel with a flexible, easy to use solution that meets the security requirements of wide area networking professionals. Designed to be a cost-effective alternative to leased lines, it is engineered specifically for harsh outdoor environments, yet also works well in indoor deployments. The Cisco Aironet 1400 Series Wireless Bridge is the premier high-speed, high-performance outdoor bridging solution for line-of-sight applications, providing features such as:

- Support for both point-to-point or point-to-multipoint configurations (Figure 1)
- Industry leading range and throughput, supporting data rates up to 54 Mbps
- Enhanced security mechanisms based on 802.11 and 802.11i standards
- Ruggedized enclosure optimized for harsh outdoor environments with extended operating temperature range
- Integrated or optional external antennas for flexibility in deployment
- Designed specifically for ease-of-installation and operation

BRIDGING FIXED NETWORKS

The Cisco Aironet 1400 Series Wireless Bridge can be used to provide either:

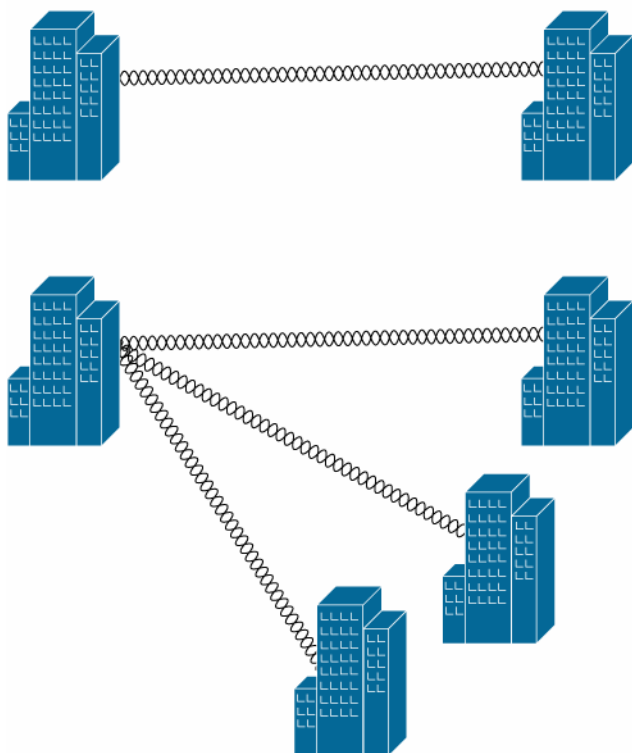
1. The sole connection
2. The primary connection with an additional technology such as a T1 line providing redundancy, or
3. As a back up solution for additional resiliency in conjunction with other technologies such as fiber optics.

Ideal applications include:

- Local Government—Backbone (backhaul) portion of community-based municipal networks such as public safety networks, or any fixed network location
- Education—Higher education campus building interconnects and K-12 schools within a metropolitan area

- Healthcare—Hospital campuses and physician offices
- Enterprise Campus—Building-to-building links (point-to-point or point-to-multipoint), or any situation where a company needs to expand across an area where right-of-way is not possible
- Service Provider—Backhaul to aggregate multiple lower-speed links into a higher speed link

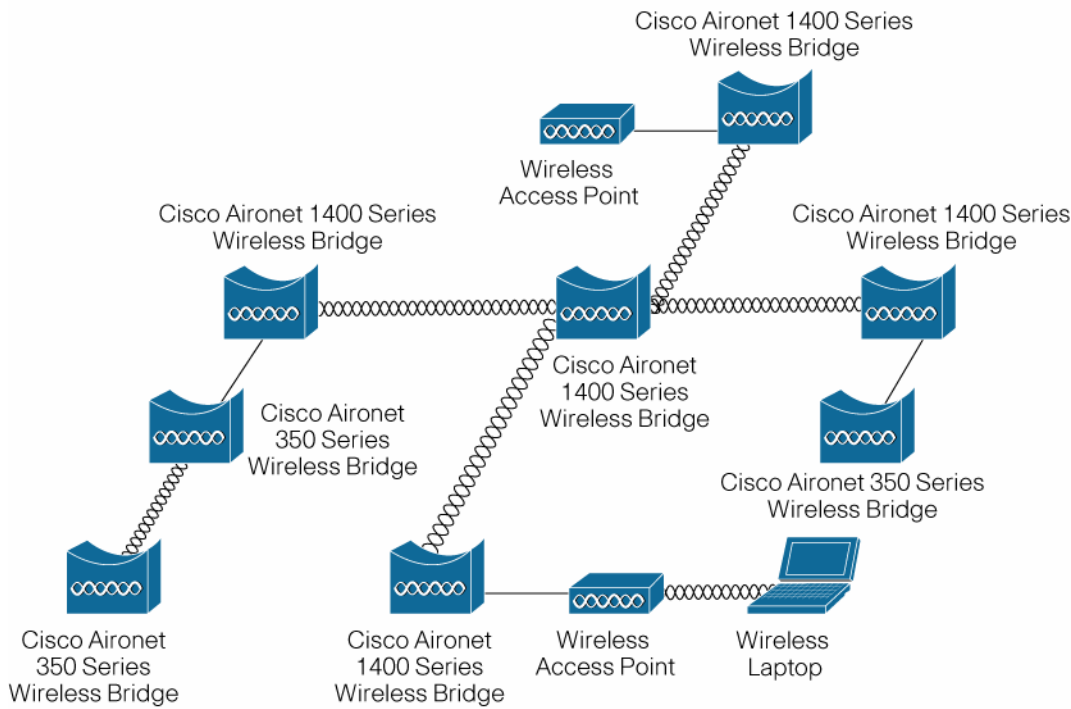
Figure 1. Point-to-Point and Point-to-Multipoint Applications



Mobile Networks and Wireless Bridges

The concept of mobile networks is significant not only for service providers looking to offer seamless network access, but also for individual organizations such as municipal public safety units. In many instances, the technology exists to create the zones that provide the mobile network, but the challenge lies in bringing the network to these zones. The Cisco Aironet 1400 Series Wireless Bridge provides a cost-effective solution to this application. The wireless bridge can connect to the network that contains the 2.4 GHz access points or bridges that are providing wireless zone coverage, and also provide the backhaul link to the high-speed network (Figure 2). Whether these zones are 802.11 hot spots at cafes and restaurants or bridged 802.11b cells for mobile networks, the Cisco Aironet 1400 Series Wireless Bridge provides a non-interfering and higher speed distribution service.

Figure 2. Public Safety Network Utilizing Wireless Bridges



ROI

The high-speed links between the wireless bridges deliver throughput several times faster than E1/T1 lines for a fraction of the cost—eliminating the need for expensive leased lines or difficult-to-install fiber-optic cable. Because bridges have no recurring charges, savings on leased-line services quickly pay for the initial hardware investment. The Cisco Aironet 1400 Series with its 54 Mbps throughput capability connects discrete sites into a single LAN at speeds much greater than leased lines, even when they are separated by obstacles such as freeways, railroads, or bodies of water that are practically insurmountable using copper or fiber-optic cable.

High Performance

Operating in the unlicensed 5.8 GHz band, the Cisco Aironet 1400 Series Wireless Bridge sets a new standard for performance, combining powerful 250 mW radios, industry-leading receive sensitivity, installation tools to assist in bridge placement, delay spread capabilities, and a choice of integrated or connectorized high gain antennas, Cisco provides a complete solution for a wide variety of fixed wireless applications.

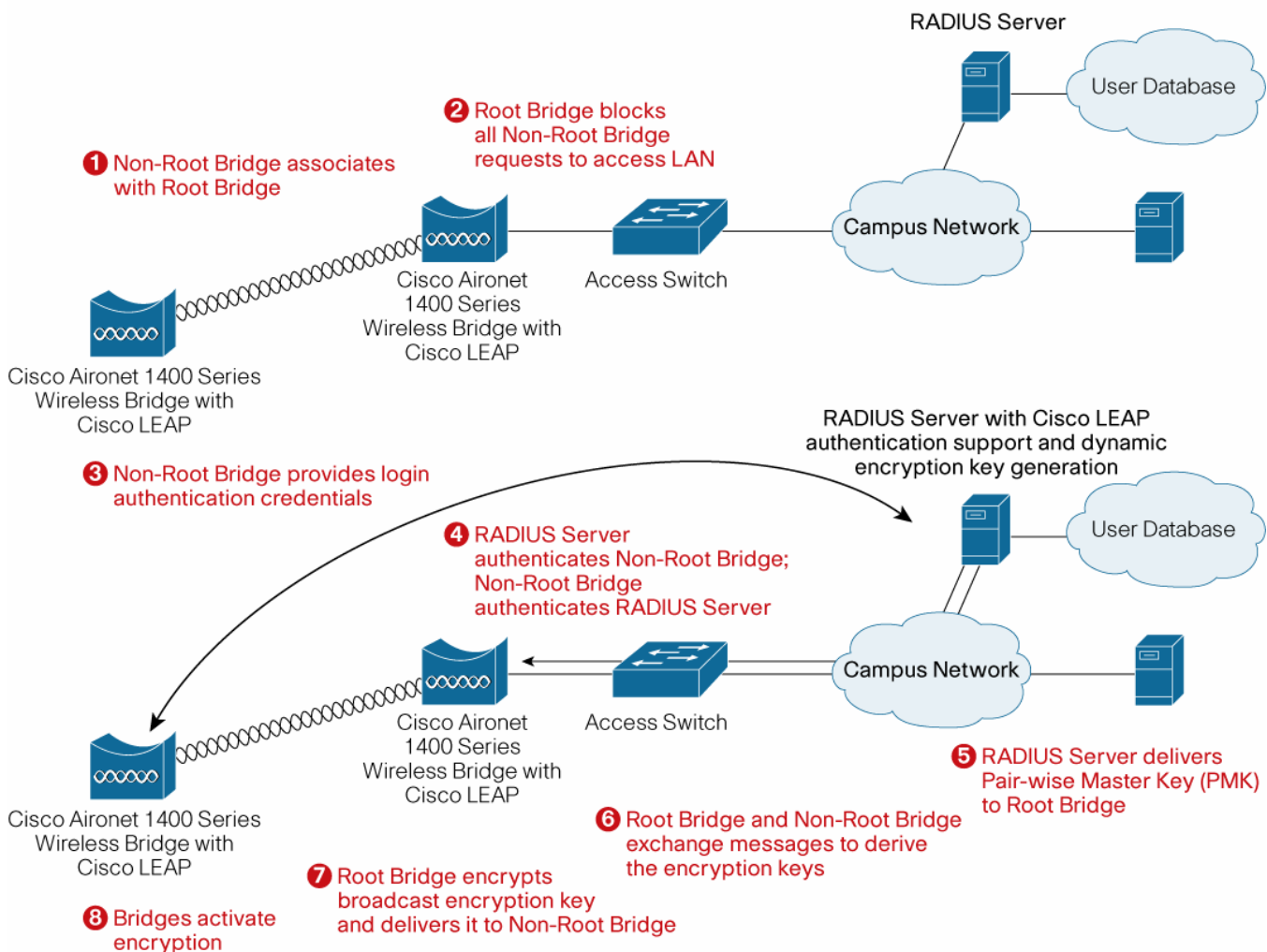
Data rates of 54 Mbps can be enabled for point-to-point links up to 8.5 miles, and for point-to-multipoint links up to 2.75 miles. Aggregate throughput can be obtained in excess of 28 Mbps. Also, by using higher gain antennas or lower data rates, ranges in excess of 20 miles point-to-point can be covered.¹

¹ Aggregate throughput can be obtained in excess of 28 Mbps. Also, by using higher gain antennas or lower data rates, ranges in excess of 20 miles point-to-point can be covered.

Security

Cisco Aironet has a proven track record for leading the industry with advanced security features. Building on basic wireless security, support for the Cisco Wireless Security Suite is included with the Cisco Aironet 1400 Series Wireless Bridge (Figure 3), featuring support for IEEE 802.1X mutual authentication and strong encryption with Temporal Key Integrity Protocol (TKIP). Network managers can confidently deploy a wireless bridging solution that provides robust security and protection, with the ease of centralized management through a Remote Authentication Dial-In User Service (RADIUS) server such as Cisco Secure Access Control Server (ACS).

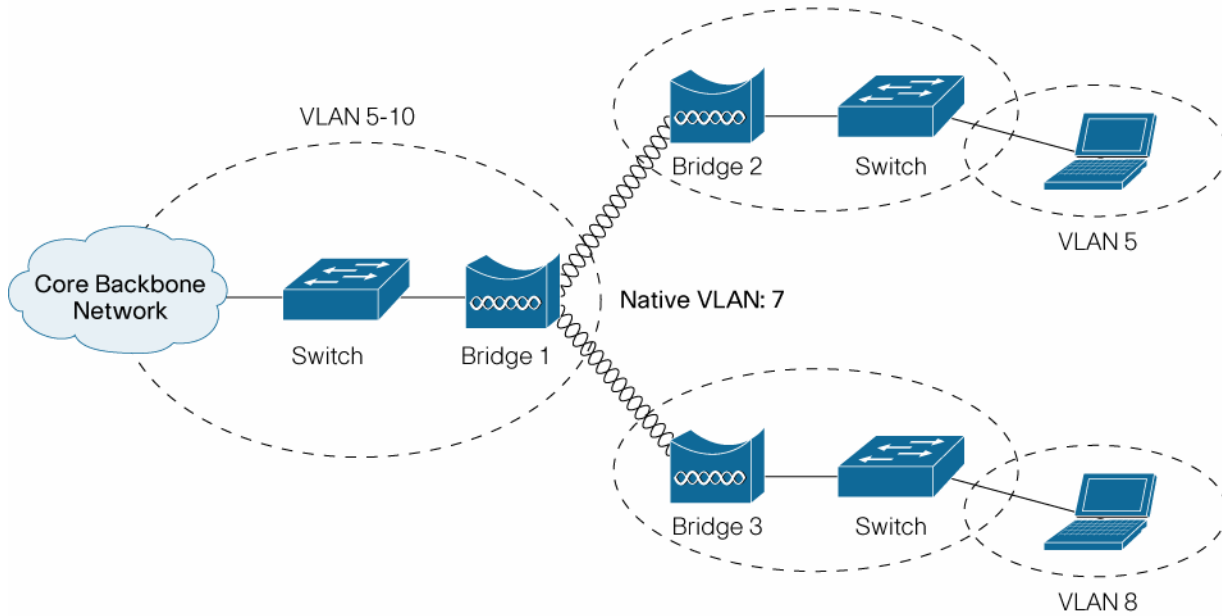
Figure 3. Wireless Bridge Security with the Cisco Wireless Security Suite



Intelligent Network Services

The Cisco Aironet 1400 Series Wireless Bridge utilizes Cisco IOS® Software to provide a familiar user interface with common functionality, scalability, and security. Additionally, advanced features such as quality of service (QoS) are included, enabling packet prioritization for voice, video, and data. Trunking up to 24 voice-over-IP (VoIP) circuits and data over point-to-point links is also possible. Bandwidth can be increased between bridged networks through the aggregation of multiple bridges at each site through Fast Ether Channel (FEC), or Port Aggregation Protocol (PAg-P), or through routing protocols. For a multipurpose network, Virtual Local Area Networks (VLANs) can be configured by allowing different non-root bridges operating on the same root bridge to trunk different VLANs. Network services can now be segmented based upon end user requirements (Figure 4).

Figure 4. VLAN Configuration for Wireless Bridges



Flexible

Rapid deployment and redeployment can be achieved with no reliance upon telecommunications providers nor a lengthy license or trenching process. The Cisco Aironet 1400 Series Wireless Bridge allows placement in an outdoor environment without the use of an expensive additional National Electrical Manufacturers Association (NEMA) enclosure. Further flexibility is achieved by enabling point-to-point or point-to-multipoint networks with a single product line. The mounting bracket has been designed to allow installation on poles, walls, and roofs, while also providing a mechanism for choosing the desired polarization. The Cisco Aironet 1400 Series Wireless Bridge offers an outdoor wireless bridging solution in two product SKUs. The captured antenna version features an integrated radio and high-gain integrated antenna for user installations of point-to-point links and the non-root nodes of point-to-multipoint networks. The connectorized version provides professional installers with an N-Type connector that allows the deployment of the root nodes of point-to-multipoint networks with omni-directional or sector antennas, or of high gain dish antennas for longer links. The external antenna options are:

- 9.0 dBi vertically polarized omni antenna
- 9.5 dBi sector antenna with support for vertical or horizontal linear polarization
- 28.0 dBi dish antenna with support for vertical or horizontal linear polarization

Ease of Use

Based upon IEEE 802.11a technology and utilizing the same Cisco IOS Software as in a wired network, the Cisco Aironet 1400 Series provides a user with a familiar experience that supports an “out-of-the-box” deployment. Convenient LEDs and an externally accessible Received Signal Strength Indicator (RSSI) for alignment feedback/diagnostics and a quick-hang mounting bracket allows for an easy installation process.

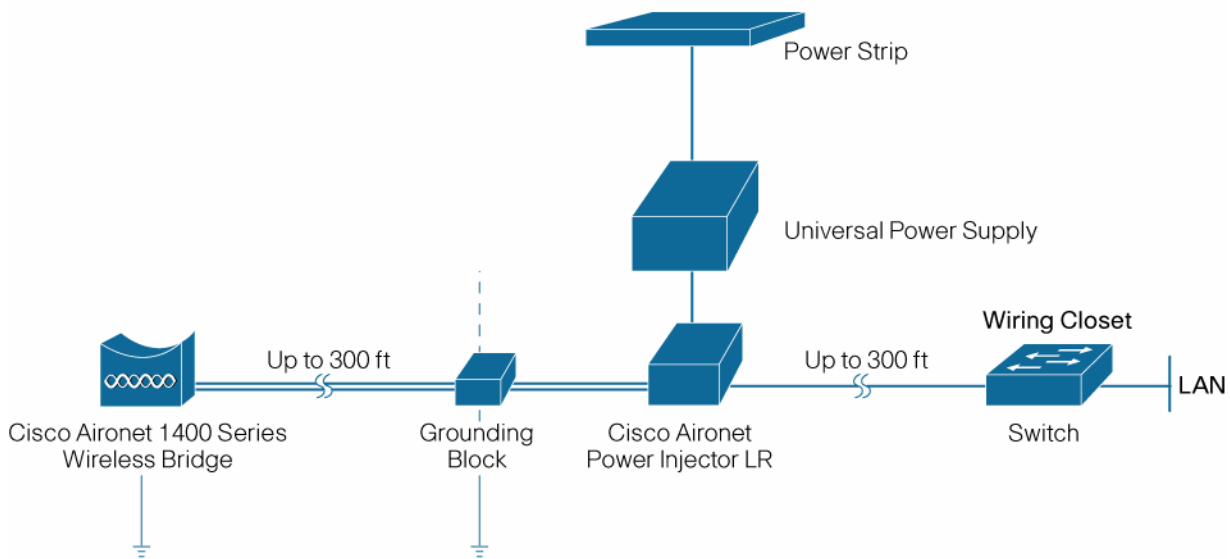
To simplify ordering and installation, the Cisco Aironet 1400 Series Wireless Bridge provides the professional or IT installer with all of the components and accessories necessary to complete most deployments, including:

- The Cisco Aironet Power Injector LR for supplying power to the bridge without expensive electrician costs (Figure 5). The power injector also extends the distance the 1400 Series Wireless Bridge can be installed from the network. (Figure 6)
- The Cisco Aironet 1400 Series Multifunction Mount, with its innovative design, to provide greater ease of installation and flexibility. The mount comes complete with stainless steel hardware to improve corrosion resistance.
- Two lengths of shielded Dual RG-6 cables and a building entry point grounding block, all with F-Type connectors for use with the Power Injector LR and connection to the bridge unit.
- A power supply and cord, enough coaxial sealant for all outdoor connectors, and corrosion-proof gel to protect grounding connections.

Figure 5. Cisco Aironet Power Injector



Figure 6. Power Injector Distance Extension



Advanced Management Features

The CiscoWorks Wireless LAN Solution Engine (WLSE) is available as a management tool for Cisco Aironet access points operating autonomously (without a Wireless LAN Controller) and wireless bridges. CiscoWorks WLSE is a turnkey, scalable, and centralized management platform with an HTML-based interface. It uses Simple Network Management Protocol (SNMP) and Secure Shell (SSH)/Secure Sockets Layer (SSL) for managing Cisco Aironet access points and wireless bridges via a Web browser.

For more information on CiscoWorks WLSE, visit: <http://www.cisco.com/go/wlse>

See Table 1 for additional features and benefits. For system specifications of the Cisco Aironet 1400 Series Wireless Bridge see Table 2, for product specifications see Table 3.

Table 1. Features and Benefits

Features	Benefits
802.11a radio with 24 dBm (250 mW) maximum transmit power, -70 dBm receive sensitivity at 54 Mbps data rate²	The 5.8 GHz radio in the Cisco Aironet 1400 Series offers superior radio performance that results in industry-leading range. The greater the range, the higher the supported data rate or the more reliable the link at a given data rate.
Industry-leading security, network management, and software feature set	The Cisco Aironet 1400 Series software builds on the feature-rich, customer-driven Cisco Aironet software and the Cisco Wireless Security Suite, including 802.1X support with mutual authentication and dynamic encryption keys with TKIP; management through SNMP, Telnet, and Web browsers.
Fully weatherized metal housing and extended operating temperature (-30 to 55oC or -22 to 131oF)	The rugged weatherproof design of the Cisco Aironet 1400 Series provides flexibility for deployment in a variety of settings. The rugged features and broad operating temperature range support deployment in factories, warehouses, and the outdoors.
The Cisco Aironet Power Injector LR	The Power Injector LR converts the standard 10/100 baseT Ethernet category 5 RJ-45 interface that is suitable for weather-protected areas to a dual F-Type connector interface for dual coax cables that are more suitable for harsh outdoor environments. While providing a 100baseT interface to the Cisco Aironet 1400 Series, the Power Injector LR also provides power to the unit over the same cables with a power discovery feature that protects other appliances from damage should they accidentally be connected. As an added benefit to the installer, Auto MDIX is built in, allowing the dual cables to be swapped and while maintaining the same functionality. To support longer cable runs from your infrastructure network switch or router, the Power Injector LR is designed to accommodate 100 m coaxial cable run plus 100 m of indoor cat5 cable, to enable total cable runs up to 200 meters. Lightning and surge protection is also included at the F-Type connector interface to provide added protection to your network infrastructure devices.
Flexible mounting with multifunction mount or optional roof/wall mount	The Cisco Aironet 1400 Series Multifunction Mount allows the captured antenna Cisco Aironet 1400 Series to provide either horizontal or vertical polarization. With its quick-hang feature, the mount will support the weight of the bridge during the alignment process. To assist the installation, hoisting rings are attached to the mount. The mount will interface to poles or masts from 1.5 in. to 2.5 in. while allowing for elevation and azimuth alignment. For the connectorized version, the mount provides a wall mount mechanism. The captured antenna Cisco Aironet 1400 Series can be mounted to a wall, roof, or other flat surface with the addition of the optional Cisco Aironet 1400 Series Roof/Wall Mount kit.
Wireless root bridge	The wireless root bridge role provides the Cisco Aironet 1400 Series with support for both point-to-point or point-to-multipoint bridging
Wireless non-root bridge	The wireless non-root bridge allows the Cisco Aironet 1400 Series to operate as the remote node in a point-to-point or point-to-multipoint bridge network.
Wireless packet concatenation	The concatenation of smaller packets into larger ones allows the Cisco Aironet 1400 Series to more efficiently utilize the wireless medium and provide higher overall data throughputs.
Wireless link distance adjustment	The link distance parameter allows the user to tune the carrier sense multiple access with collision avoidance (CSMA/CA) parameters for the particular range to maximize performance.
Wireless programmable clear channel assessment	With a programmable clear channel assessment, the Cisco Aironet 1400 Series can be configured to the particular background interference level found in your environment for reduced contention overhead with other wireless systems.
Antenna alignment assistance	The Cisco Aironet 1400 Series Wireless Bridge provides an auto-configuration and installation mode for out of the box deployment of point to point links without the need for a configuration via telnet, File Transfer Protocol (FTP), or SNMP. This mode drives LEDs and a Received Signal Strength Indicator (RSSI) port with a voltage output proportional to received signal strength for use in the installation and alignment process. This frees up the installers to perform their installation process and verify the link quality without requiring Cisco IOS Software or data networking knowledge.
Diagnostic LEDs	Provide alignment feedback to the installer and diagnostic information to troubleshooters directly at the antenna

² 24 dBm transmit power only available in FCC configuration units

Features	Benefits
	without the use of a computer. Diagnostic information is also provided on the Power Injector LR LEDs
16 megabytes of flash memory	Memory space for future firmware upgrades to support new 802.11 standards and advanced features.
One N-Type connector for external antenna connection	The N-Type connector is the industry standard for higher performance RF systems in an outdoor environment and is compatible with the Cisco® line of optional 5.8 GHz antennas, enabling wireless bridging professional installers to customize radio coverage for specific deployment scenarios.
Easy weather sealing and grounding	The Cisco Aironet 1400 Series provides standard N-Type and F-Type coaxial cable connectors for easy and reliable weather sealing and grounding. A coaxial sealant is provided with each system, along with a standard grounding block to allow the installer to meet National Electric Code guidelines.

Table 2. Cisco Aironet 1400 Series Wireless Bridge System Specifications

	AIR-BR1410A-x-K9	AIR-BR1410A-A-K9-N
Frequency band	5.725 to 5.825 GHz (FCC UNII 3)	5.725 to 5.825 GHz (FCC UNII 3)
Wireless modulation	Coded Orthogonal Frequency Division Multiplexing (COFDM)	Coded Orthogonal Frequency Division Multiplexing (COFDM)
Media access protocol	Carrier Sense Multiple Access with Collision Avoidance (CSMA/CA)	Carrier Sense Multiple Access with Collision Avoidance (CSMA/CA)
Modulation	<ul style="list-style-type: none"> • BPSK @ 6 and 9 Mbps • QPSK @ 12 and 18 Mbps • 16-QAM @ 24 and 36 Mbps • 64-QAM @ 48 and 54 Mbps 	<ul style="list-style-type: none"> • BPSK @ 6 and 9 Mbps • QPSK @ 12 and 18 Mbps • 16-QAM @ 24 and 36 Mbps • 64-QAM @ 48 and 54 Mbps
Non-overlapping channels	4	4
Receive sensitivity (10% PER with 3200 byte packets)	<ul style="list-style-type: none"> • 6 Mbps: -83 dBm • 9 Mbps: -83 dBm • 12 Mbps: -83 dBm • 18 Mbps: -82 dBm • 24 Mbps: -79 dBm • 36 Mbps: -76 dBm • 48 Mbps: -72 dBm • 54 Mbps: -70 dBm 	<ul style="list-style-type: none"> • 6 Mbps: -83 dBm • 9 Mbps: -83 dBm • 12 Mbps: -83 dBm • 18 Mbps: -82 dBm • 24 Mbps: -79 dBm • 36 Mbps: -76 dBm • 48 Mbps: -72 dBm • 54 Mbps: -70 dBm
Maximum operational receive level	-19 dBm	-19 dBm
Maximum survivable receive level	0 dBm	0 dBm

	AIR-BR1410A-x-K9	AIR-BR1410A-A-K9-N
Available transmit power settings	<ul style="list-style-type: none"> • AIR-BR1410A-A-K9 <ul style="list-style-type: none"> ◦ 250 mW (24 dBm) ◦ 200 mW (23 dBm) ◦ 155 mW (22 dBm) ◦ 125 mW (21 dBm) ◦ 60 mW (18 dBm) ◦ 30 mW (15 dBm) ◦ 15 mW (12 dBm) • AIR-BR1410A-K-K9 <ul style="list-style-type: none"> ◦ 155 mW (22 dBm) ◦ 125 mW (21 dBm) ◦ 60 mW (18 dBm) ◦ 30 mW (15 dBm) ◦ 15 mW (12 dBm) • AIR-BR1410A-Z-K9 <ul style="list-style-type: none"> ◦ 20 mW (13 dBm) ◦ 10 mW (10 dBm) ◦ 8 mW (9 dBm) ◦ 6 mW (8 dBm) ◦ 5 mW (7 dBm) ◦ 2.5 mW (4 dBm) • AIR-BR1410A-E-K9 <ul style="list-style-type: none"> ◦ 5 mW (7 dBm) ◦ 2.5 mW (4 dBm) 	<ul style="list-style-type: none"> • 250 mW (24 dBm) • 200 mW (23 dBm) • 155 mW (22 dBm) • 125 mW (21 dBm) • 60 mW (18 dBm) • 30 mW (15 dBm) • 15 mW (12 dBm)
	Note: Maximum power setting will vary according to individual country regulations	
Point-to-point range³	<ul style="list-style-type: none"> • Americas <ul style="list-style-type: none"> ◦ 8.5 miles (14 km) @ 54 Mbps ◦ 16 miles (26 km) @ 9 Mbps • Korea <ul style="list-style-type: none"> ◦ 5.5 miles (9 km) @ 54 Mbps ◦ 11.25 miles (18.25 km) @ 9 Mbps • Australia & New Zealand <ul style="list-style-type: none"> ◦ 3.5 miles (5.75 km) @ 54 Mbps ◦ 9.5 miles (15.25 km) @ 9 Mbps • Ireland & China <ul style="list-style-type: none"> ◦ 1.75 miles (2.75 km) @ 54 Mbps ◦ 7.25 miles (11.5 km) @ 9 Mbps 	<ul style="list-style-type: none"> • Americas <ul style="list-style-type: none"> ◦ 13 miles (21 km) @ 54 Mbps ◦ 23 miles (37 km) @ 9 Mbps ◦ (Antennas are 28 dBi dish)
Point-to-multipoint range (sector antenna at root)³	<ul style="list-style-type: none"> • Americas <ul style="list-style-type: none"> ◦ 2.75 miles (4.5 km) @ 54 Mbps ◦ 8.5 miles (14 km) @ 9 Mbps • Korea <ul style="list-style-type: none"> ◦ 1 mile (1.75 km) @ 54 Mbps ◦ 5 miles (8 km) @ 9 Mbps • Australia & New Zealand <ul style="list-style-type: none"> ◦ 0.75 miles (1.2 km) @ 54 Mbps ◦ 3.25 miles (5.25 km) @ 9 Mbps • Ireland & China <ul style="list-style-type: none"> ◦ 0.4 miles (0.6 km) @ 54 Mbps ◦ 1.75 miles (2.75 km) @ 9 Mbps 	<ul style="list-style-type: none"> • Americas <ul style="list-style-type: none"> ◦ 4.25 miles (7 km) @ 54 Mbps ◦ 11 miles (18 km) @ 9 Mbps ◦ (Non-root antenna is 28 dBi dish)
Antenna	Captured Linear Polarization; 22.5 dBi gain ⁴ : 10° E-plane by 12° H-plane beamwidth	One N-Type connector for professional installations (antennas sold separately)

³ The distances referenced here are approximations and should be used for estimation purposes only.

⁴ AIR-BR1410A-K-K9 has 20 dBi gain

	AIR-BR1410A-x-K9	AIR-BR1410A-A-K9-N
Security	Cisco Wireless Security Suite, including: <ul style="list-style-type: none"> • Authentication <ul style="list-style-type: none"> ◦ 802.1X support including LEAP to yield mutual authentication and dynamic per-user, per-session encryption keys • Encryption <ul style="list-style-type: none"> ◦ Support for static and dynamic IEEE 802.11 WEP keys of 40 bits and 128 bits ◦ WPA TKIP and Cisco TKIP enhancements: key hashing (per packet keying), Message Integrity Check (MIC), and broadcast key rotation 	Cisco Wireless Security Suite, including: <ul style="list-style-type: none"> • Authentication <ul style="list-style-type: none"> ◦ 802.1X support including LEAP to yield mutual authentication and dynamic per-user, per-session encryption keys • Encryption <ul style="list-style-type: none"> ◦ Support for static and dynamic IEEE 802.11 WEP keys of 40 bits and 128 bits ◦ WPA TKIP and Cisco TKIP enhancements: key hashing (per packet keying), Message Integrity Check (MIC), and broadcast key rotation
SNMP compliance	v1 and v2	v1 and v2

Table 3. Cisco Aironet 1400 Series Wireless Bridge Product Specifications

	AIR-BR1410A-x-K9	AIR-BR1410A-A-K9-N	Power Injector LR
Status LEDs	Four LEDs: <ul style="list-style-type: none"> • Install • Radio • Status • Ethernet 	Four LEDs: <ul style="list-style-type: none"> • Install • Radio • Status • Ethernet 	Four LEDs: <ul style="list-style-type: none"> • Power ON • Injector status • LAN Ethernet status • Bridge Ethernet status
RSSI port	BNC connector DC Voltage port (0VDC to 2.7 VDC)	BNC connector DC Voltage port (0VDC to 2.7 VDC)	—
Uplink	100 Mbps over dual coaxial cables	100 Mbps over dual coaxial cables	10/100BaseT Ethernet
Configuration support	Telnet, HTTP, FTP, TFTP, SNMP	Telnet, HTTP, FTP, TFTP, SNMP	—
Compliance	Standards <ul style="list-style-type: none"> • Safety: <ul style="list-style-type: none"> ◦ UL 60950 ◦ CSA C22.2 No. 60950-00 ◦ IEC 60950 ◦ EN 60950 • Radio Approvals: <ul style="list-style-type: none"> ◦ FCC Part 15.207, 15.407 & 15.209 Class B ◦ ICES-003 Class B (Canada) ◦ Canada DGTP-010 ◦ FCC Bulletin OET-65C ◦ Industry Canada RSS-102, RSP100, RSS 210 Issue 5 • EMI and Susceptibility (Class B): <ul style="list-style-type: none"> ◦ FCC Part 15.107 & 15.109 Class B ◦ ICES-003 Class B (Canada) ◦ EN 55022 Class B ◦ EN 55024 	Standards <ul style="list-style-type: none"> • Safety: <ul style="list-style-type: none"> ◦ UL 60950 ◦ CSA C22.2 No. 60950-00 ◦ IEC 60950 ◦ EN 60950 ◦ NEMA 4 • Radio Approvals: <ul style="list-style-type: none"> ◦ FCC Part 15.207, 15.407 & 15.209 Class B ◦ ICES-003 Class B (Canada) ◦ Canada DGTP-010 ◦ FCC Bulletin OET-65C ◦ Industry Canada RSS-102, RSP100, RSS 210 Issue 5 • EMI and Susceptibility (Class B): <ul style="list-style-type: none"> ◦ FCC Part 15.107 & 15.109 Class B ◦ ICES-003 Class B (Canada) ◦ EN 55022 Class B ◦ EN 55024 	Standards <ul style="list-style-type: none"> • Safety: <ul style="list-style-type: none"> ◦ UL 60950 ◦ CSA C22.2 No. 60950-00 ◦ IEC 60950 ◦ EN 60950 • EMI and Susceptibility (ClassB): <ul style="list-style-type: none"> ◦ FCC Part 15.107 & 15.109 Class B ◦ ICES-003 Class B (Canada) ◦ EN 55022 Class B ◦ EN 55024
Country compliance	Customers are responsible for verifying approval for use in their country. Please see http://www.cisco.com/go/aironet/compliance to verify approval and to identify the regulatory domain that corresponds to a particular country. Not all regulatory domains have been approved. As they are approved, the part numbers will be available on the Global Price List.		
Dimensions	11.4in x 11.4in x 4.2in (29cm x 29cm x 11cm)	11.6in x 11.6in x 3.6in (29cm x 29cm x 9cm)	6.7in x 6.3in x 1.3in (17cm x 16cm x 3cm)
Weight	11 lbs. (5 kg)	10 lbs. (5 kg)	1.4lbs. (0.6kg)
Operational temperature	−30° to +55°C (−22° to +131°F)	−30° to +55°C (−22° to +131°F)	0° to +50°C (32° to 122°F)
Storage temperature	−40° to +85°C (−40° to +185°F)	−40° to +85°C (−40° to +185°F)	−40° to +70°C (−40° to +158°F)

	AIR-BR1410A-x-K9	AIR-BR1410A-A-K9-N	Power Injector LR
Operational altitude	4206 m (13,800 ft.)	4206 m (13,800 ft.)	4206 m (13,800 ft.)
Storage altitude	4877 m (16,000 ft.)	4877 m (16,000 ft.)	4877 m (16,000 ft.)
Humidity	0 to 100% (condensing)	0 to 100% (condensing)	0 to 90% (non-condensing)
Vibration	0.001 G2/Hz from 5–100 Hz	0.001 G2/Hz from 5–100 Hz	0.001 G2/Hz from 5–100 Hz
Storage vibration	0.01 G2/Hz from 5–100 Hz	0.01 G2/Hz from 5–100 Hz	0.01 G2/Hz from 5–100 Hz
Enclosure	Aluminum with environmentally sealed plastic radome	NEMA-4, aluminum	Metal case
AC power	Not Required as uses DC voltage from Power Injector	Not Required as uses DC voltage from Power Injector	100 to 240 VAC +/- 10% (power supply)
DC power	48 VDC +/-2V	48 VDC +/-2V	48 VDC +/-2V
Warranty	One year	One year	One year



Corporate Headquarters
Cisco Systems, Inc.
170 West Tasman Drive
San Jose, CA 95134-1706
USA
www.cisco.com
Tel: 408 526-4000
800 553-NETS (6387)
Fax: 408 526-4100

European Headquarters
Cisco Systems International BV
Haarlerbergpark
Haarlerbergweg 13-19
1101 CH Amsterdam
The Netherlands
www-europe.cisco.com
Tel: 31 0 20 357 1000
Fax: 31 0 20 357 1100

Americas Headquarters
Cisco Systems, Inc.
170 West Tasman Drive
San Jose, CA 95134-1706
USA
www.cisco.com
Tel: 408 526-7660
Fax: 408 527-0883

Asia Pacific Headquarters
Cisco Systems, Inc.
168 Robinson Road
#28-01 Capital Tower
Singapore 068912
www.cisco.com
Tel: +65 6317 7777
Fax: +65 6317 7799

Cisco Systems has more than 200 offices in the following countries and regions. Addresses, phone numbers, and fax numbers are listed on the **Cisco.com Website at www.cisco.com/go/offices.**

Argentina • Australia • Austria • Belgium • Brazil • Bulgaria • Canada • Chile • China PRC • Colombia • Costa Rica • Croatia • Cyprus • Czech Republic
Denmark • Dubai, UAE • Finland • France • Germany • Greece • Hong Kong SAR • Hungary • India • Indonesia • Ireland • Israel • Italy
Japan • Korea • Luxembourg • Malaysia • Mexico • The Netherlands • New Zealand • Norway • Peru • Philippines • Poland • Portugal
Puerto Rico • Romania • Russia • Saudi Arabia • Scotland • Singapore • Slovakia • Slovenia • South Africa • Spain • Sweden
Switzerland • Taiwan • Thailand • Turkey • Ukraine • United Kingdom • United States • Venezuela • Vietnam • Zimbabwe

Copyright © 2006 Cisco Systems, Inc. All rights reserved. CCSP, CCVP, the Cisco Square Bridge logo, Follow Me Browsing, and StackWise are trademarks of Cisco Systems, Inc.; Changing the Way We Work, Live, Play, and Learn, and iQuick Study are service marks of Cisco Systems, Inc.; and Access Registrar, Aironet, BPX, Catalyst, CCDA, CCDP, CCIE, CCIP, CCNA, CCNP, Cisco, the Cisco Certified Internetwork Expert logo, Cisco IOS, Cisco Press, Cisco Systems, Cisco Systems Capital, the Cisco Systems logo, Cisco Unity, Enterprise/Solver, EtherChannel, EtherFast, EtherSwitch, Fast Step, FormShare, GigaDrive, GigaStack, HomeLink, Internet Quotient, IOS, IP/TV, iQ Expertise, the iQ logo, iQ Net Readiness Scorecard, LightStream, Linksys, MeetingPlace, MGX, the Networkers logo, Networking Academy, Network Registrar, Packet, PIX, Post-Routing, Pre-Routing, ProConnect, RateMUX, ScriptShare, ScriptShare, SlideCast, SMARTnet, The Fastest Way to Increase Your Internet Quotient, and TransPath are registered trademarks of Cisco Systems, Inc. and/or its affiliates in the United States and certain other countries.

All other trademarks mentioned in this document or Website are the property of their respective owners. The use of the word partner does not imply a partnership relationship between Cisco and any other company. (0601R)



BARCODING, WIRELESS AND DATA COLLECTION

Our customers turn to us to help them become more productive and profitable. TPI's expertise guarantees your project will be successful: on time, on budget and meet your ROI requirements.

TPI will facilitate your entire wireless and data collection project:

- ✓ *Business analysis*
- ✓ *Project justification & ROI*
- ✓ *Wireless design, RF site survey and spectrum analysis*
- ✓ *WWAN, WLAN design & installation*
- ✓ *Custom software*
- ✓ *Integration w/legacy systems*
- ✓ *Mobile computers*
- ✓ *Data collection terminals*
- ✓ *Barcode printers, labels and scanners*
- ✓ *RFID solutions*
- ✓ *Configuration and deployment*
- ✓ *Training and installation*
- ✓ *Service and upgrades*
- ✓ *Remote device management and support*

TPI can share best practices in data collection from a number of industries including wholesale distribution, manufacturing, healthcare and retail/consumer goods. Our expertise allows you to shorten your learning curve and increase your return on investment.

Product specification sheet provided by TPI

www.tpi1.com
888-488-4244

