



# ALIEN SQUIGGLE® FAMILY OF EPC GEN 2 RFID TAGS

## Gen 2 World Tags and Small Form Factor Tags

Alien Technology® manufactures a range of EPC Class 1 Generation 2 inlays and labels. Alien's EPC Class 1 Generation 2 tags are part of a growing portfolio of designs and form factors delivering optimal performance in a variety of applications.

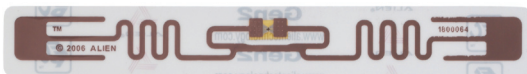
The Alien World Tags are designed for uniform operation globally within a +/-1.5 db band from 860 to 960 MHz, which enables each individual tag to be used successfully at the unique RFID operating frequencies of the Americas, Europe, Asia and Africa. Alien World Tags enable companies to manufacture products on one continent and ship them worldwide utilizing a single RFID tag type – with the tag exhibiting uniform behavior and delivering consistent performance globally.

The small factor tags are ideal for demanding applications requiring a small footprint, such as item level tagging. These tags can be incorporated into packaging to leverage metal components within the packaging to extend their read range.

### WORLD TAGS

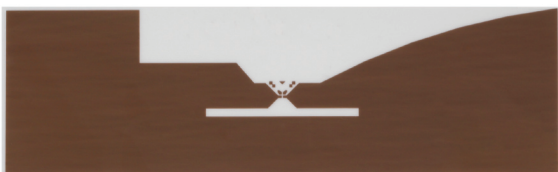
#### GEN 2 SQUIGGLE®

- World Tag: global operation 860 to 960 MHz
- The EPC Class 1 Gen 2 price/performance benchmark
- High performance solution for most packaging including products containing metal and water
- 97mm x 11mm



#### GEN 2 M TAG

- World Tag: global operation 860 to 960 MHz
- High gain, high performance tag
- Ideal for plastic totes, pallets & reusable assets
- 94mm x 42mm



#### GEN 2 CASTLE TAG

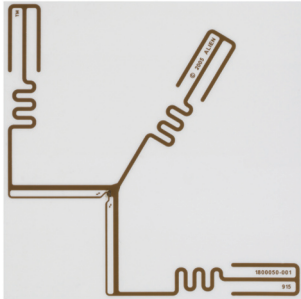
- World Tag: global operation 860 to 960 MHz
- General purpose supply chain tag optimized for paper and corrugate
- Form factor ideal for applications such as apparel hang tags and 3 inch labels
- 73mm x 34mm





### GEN 2 2X2

- World Tag: global operation 860 to 960 MHz
- Omni-directional tag designed for applications such as airline baggage and apparel
- Square design enables cost effective conversion for vertical labels
- 47mm x 42mm



### GEN 2 OMNI-SQUIGGLE®

- World Tag: global operation 860 to 960 MHz
- High performance, omni-directional design
- Form factor supports 3x3 inch labels
- 75mm x 75mm

## SMALL FORM FACTOR TAGS



### GEN 2 1X1

- Optimized for operation from 902 to 928 MHz
- Small form factor tag optimized for plastic packaging such as pharmaceutical pill bottles
- Near-field and far-field communication modes
- 25.4mm x 25.4mm



### GEN 2 MINI-SQUIGGLE®

- Optimized for operation from 902 to 928 MHz
- Ideal for item level tagging
- Near-field and far-field communication modes
- 27mm x 10mm

## PRODUCT SPECIFICATIONS

### OPERATING FREQUENCY:

- World Tags: 860-960 MHz for operation in Americas, Asia and Europe
- Small Form Factor Tags: 902-928 MHz for operation in Americas and Asia

### MEMORY:

- 240 bits NVM
- EPC size 96 bits
- Protocol Control bits 16 bits
- Access Code 32 bits
- Kill Code 32 bits

### MINIMUM PROGRAMMING CYCLES:

- 10,000 write/erase cycles

### OPERATIONAL TEMPERATURE RANGE:

- 25° C to +65° C

### RECOMMENDED BENDING RADIUS:

- 70+ mm

### THICKNESS:

- 0.42mm (Over IC)



ALIEN.

Alien Technology  
18220 Butterfield Blvd.  
Morgan Hill, CA 95037  
866-RFID NOW  
[www.alientechnology.com](http://www.alientechnology.com)



## BARCODING, WIRELESS AND DATA COLLECTION

*Our customers turn to us to help them become more productive and profitable. TPI's expertise guarantees your project will be successful: on time, on budget and meet your ROI requirements.*

*TPI will facilitate your entire wireless and data collection project:*

- ✓ *Business analysis*
- ✓ *Project justification & ROI*
- ✓ *Wireless design, RF site survey and spectrum analysis*
- ✓ *WWAN, WLAN design & installation*
- ✓ *Custom software*
- ✓ *Integration w/legacy systems*
- ✓ *Mobile computers*
- ✓ *Data collection terminals*
- ✓ *Barcode printers, labels and scanners*
- ✓ *RFID solutions*
- ✓ *Configuration and deployment*
- ✓ *Training and installation*
- ✓ *Service and upgrades*
- ✓ *Remote device management and support*

*TPI can share best practices in data collection from a number of industries including wholesale distribution, manufacturing, healthcare and retail/consumer goods. Our expertise allows you to shorten your learning curve and increase your return on investment.*

Product specification sheet provided by TPI

**www.tpi1.com**  
**888-488-4244**

